

# MedDRA® DATA RETRIEVAL AND PRESENTATION: POINTS TO CONSIDER

## ICH-Endorsed Guide for MedDRA Users on Data Output

***Release 3.25***

**March 2025**

### **Disclaimer and Copyright Notice**

This document is protected by copyright and may, with the exception of the MedDRA and ICH logos, be used, reproduced, incorporated into other works, adapted, modified, translated or distributed under a public license provided that ICH's copyright in the document is acknowledged at all times. In case of any adaption, modification or translation of the document, reasonable steps must be taken to clearly label, demarcate or otherwise identify that changes were made to or based on the original document. Any impression that the adaption, modification or translation of the original document is endorsed or sponsored by the ICH must be avoided.

The document is provided "as is" without warranty of any kind. In no event shall the ICH or the authors of the original document be liable for any claim, damages or other liability arising from the use of the document.

The above-mentioned permissions do not apply to content supplied by third parties. Therefore, for documents where the copyright vests in a third party, permission for reproduction must be obtained from this copyright holder.

MedDRA® trademark is registered by ICH

## Table of Contents

|  |           |
|--|-----------|
| <b>SECTION 1 – INTRODUCTION</b> .....                                      | <b>1</b>  |
| 1.1 Objectives of this Document .....                                      | 2         |
| 1.2 Reasons to Use MedDRA .....  | 2         |
| 1.3 How to Use this Document.....  | 2         |
| <b>SECTION 2 – GENERAL PRINCIPLES</b> .....                                | <b>4</b>  |
| 2.1 Quality of Source Data .....   | 4         |
| 2.1.1 Data conversion considerations.....                                  | 4         |
| 2.1.2 Impact of data conversion method.....                                | 5         |
| 2.2 Documentation of Data Retrieval and Presentation Practices.....        | 5         |
| 2.3 Do Not Alter MedDRA .....  | 6         |
| 2.4 Organisation-Specific Data Characteristics.....                        | 6         |
| 2.5 Characteristics of MedDRA that Impact Data Retrieval and Analysis..... | 7         |
| 2.5.1 Grouping terms (HLTs and HLGs).....                                  | 7         |
| 2.5.2 Granularity .....  | 8         |
| 2.5.3 Multi-axiality .....   | 9         |
| 2.6 MedDRA Versioning .....  | 12        |
| <b>SECTION 3 – GENERAL QUERIES AND RETRIEVAL</b> .....                     | <b>15</b> |
| 3.1 General Principles.....  | 15        |
| 3.1.1 Graphical displays .....   | 17        |
| 3.1.2 Patient subpopulations .....   | 17        |
| 3.2 Overall Presentation of Safety Profiles .....                          | 18        |
| 3.2.1 Overview by primary System Organ Class .....                         | 19        |
| 3.2.2 Overall presentations of small datasets.....                         | 21        |
| 3.2.3 Focused searches .....   | 21        |
| <b>SECTION 4 – STANDARDISED MedDRA QUERIES</b> .....                       | <b>23</b> |
| 4.1 Introduction .....   | 23        |

|                    |   |           |
|--------------------|---|-----------|
| 4.2                | SMQ Benefits .....  | 23        |
| 4.3                | SMQ Limitations.....  | 24        |
| 4.4                | SMQ Modifications and Organisation-Constructed Queries..... | 24        |
| 4.5                | SMQs and MedDRA Version Changes .....                       | 24        |
| 4.6                | SMQs – Impact of MedDRA Legacy Data Conversion.....         | 25        |
| 4.7                | SMQ Change Requests .....                                   | 25        |
| 4.8                | SMQ Technical Tools.....                                    | 25        |
| 4.9                | SMQ Applications.....                                       | 26        |
| 4.9.1              | Clinical trials .....                                       | 26        |
| 4.9.2              | Post-marketing .....  | 27        |
| 4.10               | SMQ Search Options .....                                    | 27        |
| 4.10.1             | Narrow and broad searches .....                             | 28        |
| 4.10.2             | Hierarchical SMQs.....                                      | 28        |
| 4.10.3             | Algorithmic SMQs .....                                      | 29        |
| 4.11               | SMQ and MedDRA Grouping Terms .....                         | 30        |
| <b>SECTION 5 –</b> | <b>CUSTOMISED SEARCHES .....</b>                            | <b>31</b> |
| 5.1                | Modified MedDRA Query Based on an SMQ .....                 | 31        |
| 5.2                | Customised Queries .....                                    | 32        |
| <b>SECTION 6 –</b> | <b>APPENDIX.....</b>  | <b>34</b> |
| 6.1                | Links and References .....                                  | 34        |
| 6.2                | Figures.....  | 35        |

## SECTION 1 – INTRODUCTION

The **Medical Dictionary for Regulatory Activities** terminology (MedDRA) was designed for sharing regulatory information for human medical products. In order for MedDRA to harmonise the exchange of coded data, users should be consistent in the assignment of terms to verbatim reports of symptoms, signs, diseases, etc.

MedDRA is a large terminology with very specific (“granular”) terms called Lowest Level Terms (LLTs) that serve to accurately record the reporter’s words (verbatim term). LLTs are generally synonyms linked to their parent terms known as Preferred Terms (PTs). PTs are also relatively specific and large in number.

While a highly granular terminology such as MedDRA reduces the need for interpretation at data entry, it impacts the processes of data retrieval, sorting and presentation necessary for support of drug development, pharmacovigilance and risk management. The hierarchical structure of MedDRA facilitates data retrieval by providing grouping terms (High Level Terms [HLTs] and High Level Group Terms [HLGTs]) that aggregate the very specific terms used for coding into broader medical categories. MedDRA’s multiaxiality (assignment of a PT to more than one System Organ Class [SOC]) allows flexibility in data retrieval via primary and secondary paths. Whilst grouping terms and multiaxiality permit a reasonable first approach to data retrieval, the complexity of MedDRA requires guidance to optimise the results.

This *Data Retrieval and Presentation: Points to Consider* (DRP:PTC) document is an ICH-endorsed guide for MedDRA users. It is updated annually in step with the March release of MedDRA (starting with MedDRA Version 23.0) and is support documentation for MedDRA. It was developed and is maintained by a working group charged by the ICH Management Committee. The working group consists of representatives of ICH regulatory and industry members, the World Health Organization, the MedDRA Maintenance and Support Services Organization (MSSO), and the Japanese Maintenance Organization (JMO) (see the M1 MedDRA Terminology page under [Multidisciplinary Guidelines](#) on the ICH website for a list of current members).

The principles described in this document are most effective when used in conjunction with the principles described in the *MedDRA Term Selection: Points to Consider* document for data entry (coding). This document provides data retrieval and presentation options for either industry or regulatory purposes. Although MedDRA includes some data retrieval tools, this document addresses data retrieval in a broader context.

Examples shown in this document are intended to facilitate reader understanding and are **not** intended to imply regulatory requirements.

Figures referenced in the text are found in the Appendix, Section 6.2.

In addition, the working group has developed a condensed version of the DRP:PTC document which focuses on the fundamental principles of data retrieval and is intended to support the implementation and use of MedDRA in the ICH regions and beyond (see Appendix, Section 6.1). It is available in all MedDRA languages except for English, Japanese and other languages with an available translation of the full DRP:PTC document. The full DRP:PTC document in its various translations will continue to be maintained and updated as the complete reference document.

### **1.1 Objectives of this Document**

The objective of the DRP:PTC document is to demonstrate how data retrieval options impact the accuracy and consistency of data output. For example, certain drugs or therapeutic areas may need a customised approach for data output. Options for data input described in the *MedDRA Term Selection: Points to Consider* document – or in organisation-specific coding guidelines – should also be taken into consideration.

Organisations are encouraged to document their data retrieval and output strategies, methods and quality assurance procedures in organisation-specific guidelines which should be consistent with this DRP:PTC document.

### **1.2 Reasons to Use MedDRA**

MedDRA is used to report adverse reaction/adverse event (AR/AE) terms in individual case reports – both on paper or electronically. Its structure allows for aggregation of those reported terms in medically meaningful groupings to facilitate analysis of safety data. MedDRA can also be used to list AR/AE data in reports (tables, line listings, etc.), compute frequencies of similar AR/AEs, and capture and analyse related data such as product indications, investigations, and medical and social history.

### **1.3 How to Use this Document**

The principles described in this document apply to all data encoded with MedDRA with a focus on aggregated data. This document does not address the use of MedDRA for single case reporting, labeling, medical evaluation and statistical methodology.

This *Points to Consider* document aims to help all MedDRA users, since the MedDRA terminology itself contains no specific guidelines for its use. The document provides a framework to foster **consistent** use of MedDRA for data analysis and presentation for medically meaningful review and analysis of clinical data.

This document describes the features of MedDRA and highlights the impact of MedDRA's structure, rules and conventions on data output. Examples and options described in the document are not intended to communicate specific regulatory reporting requirements or address specific database issues. This document cannot address every situation, therefore, medical judgment should always be applied.

The document is not a substitute for MedDRA training. It is essential for users to have knowledge of MedDRA's structure and content. For optimal use of MedDRA, one should refer to the *MedDRA Introductory Guide*, the *Introductory Guide for Standardised MedDRA Queries (SMQs)* (see Appendix, Section 6.1), and the *MedDRA Term Selection: Points to Consider* document).

Users are invited to contact the [MSSO Help Desk](#) with any questions or comments about this DRP:PTC document.

Users may also wish to refer to the CIOMS report "Development and Rational Use of Standardised MedDRA Queries (SMQs): Retrieving Adverse Drug Reactions with MedDRA" for additional information about the purpose and appropriate use of SMQs in safety surveillance activities. Please refer to the CIOMS website for more information on the second edition (2016) of this report, also known as the "Red Book". See Appendix, Section 6.1 Links and References.

## SECTION 2 – GENERAL PRINCIPLES

### 2.1 Quality of Source Data

High quality data output occurs when the quality of the information originally reported is maintained with consistent and appropriate term selection. Organisations should pursue continuous oversight of data quality. Data quality issues are also addressed in the *MedDRA Term Selection: Points to Consider* document. For further information, please also refer to Section 2 of the MedDRA Points to Consider Companion Document which contains detailed examples and guidance on data quality (see Appendix, Section 6.1).

#### 2.1.1 Data conversion considerations

Give special consideration to the method used to convert data from other terminologies into MedDRA. The methods used can impact retrieval and presentation strategies.

- Method 1 – Data converted from legacy terminology terms to MedDRA
  - Results will reflect the specificity of the previous terminology
  - The benefits of the greater specificity of MedDRA are not attained

Example

| Reported                   | Legacy Term               | MedDRA Term                      |
|----------------------------|---------------------------|----------------------------------|
| Gastrointestinal ischaemia | Gastrointestinal Disorder | <i>Gastrointestinal disorder</i> |

- Method 2 – Data converted from the original reported terms (verbatim terms) to MedDRA terms

Example

| Reported                   | Legacy Term               | MedDRA Term                       |
|----------------------------|---------------------------|-----------------------------------|
| Gastrointestinal ischaemia | Gastrointestinal Disorder | <i>Gastrointestinal ischaemia</i> |

Document the data conversion method used, including the date of the conversion and the MedDRA version used.

### 2.1.2 Impact of data conversion method

Combining the two conversion methods described above can affect interpretation of data output.

Example

| Data Output with Combined Data Conversion Methods   |
|---|
| If data have been converted directly from legacy terminology terms to MedDRA terms (Method 1), and if newly acquired data are coded directly from reported terms to MedDRA, the resulting differences in specificity could make interpretation difficult. |

When designing a search strategy, it may be useful to examine the **reported terms** for data converted using Method 1. If the search has been based on specific MedDRA terms, data previously coded to non-specific terms may be otherwise overlooked.

Example

| Impact of Method 1 Conversion on Search Strategy   |
|--|
| If searching with MedDRA PT <i>Gastrointestinal ischaemia</i> , cases of gastrointestinal ischaemia coded with the legacy term <i>Gastrointestinal disorder</i> would be missed. In this case, it would be important to know the date of the legacy data conversion and the MedDRA version used. |

To conduct a search requiring this level of detail, it might be necessary to review or recode from the reported terms. For legacy data, this information might be found in fields other than those for ARs/AEs.

## 2.2 Documentation of Data Retrieval and Presentation Practices

It is important to document MedDRA term selection conventions, data retrieval and output strategies (including SMQs and other queries) and quality assurance procedures. Organisation-specific strategies should be consistent with the *Points to Consider* documents and should include:

- MedDRA version used for the search
- Search strategy methods (sufficiently detailed to be reproducible)



- Version update processes
- Processes for creating and maintaining customized MedDRA queries

### 2.3 Do Not Alter MedDRA

MedDRA is a **standardised** terminology with a pre-defined term hierarchy that should not be altered. Users must not make *ad hoc* structural alterations to MedDRA, including changing the primary SOC allocation; doing so would compromise the integrity of this standard. If terms are found to be incorrectly placed in the MedDRA hierarchy, a change request should be submitted to the MSSO.

### 2.4 Organisation-Specific Data Characteristics

Although MedDRA is a standardised terminology, different organisations have implemented it in various ways. It is important to understand organisation-specific data characteristics and implementation strategies.

Each organisation should have access to a MedDRA specialist to provide expert advice and who has the knowledge of the following database characteristics:

- Database structure (how the MedDRA hierarchy is stored and used)
- Data storage (e.g., level of term, synonym/reported term)
- Data conversion from other terminologies (if applicable)
- Coding practices over time

Example

| <b>Impact of Coding Practices Over Time</b>   |
|---|
| <p>Consider the impact of gender-specific terms when comparing MedDRA coded data to data coded with an older terminology that may not have had corresponding gender-specific terms. If the prior terminology had only a single, gender-neutral term for “breast cancer”, consider the impact of selecting gender-specific breast cancer terms in MedDRA for current data.</p> |

- Limitations or restrictions

Example

| <b>Output or Display of Multiaxial PTs</b>   |
|--|
| Do not assume that PTs in their secondary SOC locations will be seen when searching in a specific HLT or HLG T since the database configuration may not allow output or display by the secondary path. |

- Term selection principles used
  - Selecting more than one term when coding a medical condition increases counts of terms.
  - Selecting a diagnosis term only (and not terms for signs and symptoms) reduces the counts of terms.
  - The adverse event profile resulting when both diagnosis and signs/symptoms terms are coded may appear different than when the diagnosis only is coded. Always consider the organisation's coding conventions when using or comparing data from other databases (e.g., co-developing or co-marketing partners, regulatory authorities).

## **2.5 Characteristics of MedDRA that Impact Data Retrieval and Analysis**

MedDRA's structure, rules and conventions are detailed in the *MedDRA Introductory Guide*.

Keep the following MedDRA characteristics in mind for data retrieval and presentation:

### **2.5.1 Grouping terms (HLTs and HLG Ts)**

The HLT and HLG T levels are an additional tool for data analysis and retrieval as they provide clinically relevant groupings of terms.

Example

| <b>Cardiac Arrhythmias</b>   |
|--|
| <i>HLGT Cardiac arrhythmias</i><br><i>HLT Cardiac conduction disorders</i><br><i>HLT Rate and rhythm disorders NEC</i><br><i>HLT Supraventricular arrhythmias</i><br><i>HLT Ventricular arrhythmias and cardiac arrest</i> |

Example as of MedDRA Version 23.0

#### 2.5.1.1 Review terms within a grouping term

Review terms within the HLT or HLT of interest to be sure that all terms therein are suited for the purpose of the output.

Example

| <b>Blood Pressure Terms</b>  |
|--|
| <i>HLT Vascular tests NEC (incl blood pressure)</i><br><i>PT Blood pressure abnormal</i><br><i>PT Blood pressure decreased</i><br><i>PT Blood pressure increased</i><br><i>PT Blood pressure measurement</i> |
| Note that terms for increased <b>and</b> decreased blood pressure are grouped under a single HLT which also includes PTs for pulmonary arterial pressure, vascular resistance, haemodynamic tests, etc.      |

Example as of MedDRA Version 23.0

#### 2.5.2 Granularity

MedDRA PTs are more specific (“granular”) than comparable terms in other terminologies. Figure 1 illustrates how data coded to a single concept from another terminology may be coded to several PTs in MedDRA.

Related events that may have been represented by a single term in another terminology may be represented by more than one MedDRA PTs. The potential impact of this on signal detection should be kept in mind.

### 2.5.3 Multiaxiality

Multiaxiality means that a PT may exist in more than one SOC. This allows terms to be grouped in different, but medically appropriate, ways (e.g., by aetiology or organ system). Each PT is assigned one primary SOC; all other SOC assignments for that PT are called “secondary”. Having a single primary SOC prevents double counting of events when outputting data from all SOCs. All possible secondary SOC assignments for any given PT may not be present in MedDRA. However, new or revised SOC assignments can be created as a result of the change request process.

#### 2.5.3.1 Primary SOC assignment rules

Primary SOC assignment rules are described in the MedDRA *Introductory Guide*. These rules affect the way terms are placed in MedDRA and determine their data display by SOC. Because these rules allow for terms related to a particular medical condition to be in more than one SOC, users should be familiar with the general structure and content of all MedDRA SOCs to be sure that data are not overlooked.

Example

| Type of Disorder | Primary SOC Rule  | Example   | Comment   |
|------------------|---|---|---|
| Congenital       | All terms for congenital disorders have as their primary SOC assignment SOC <i>Congenital, familial and genetic disorders</i> | PT <i>Congenital absence of bile ducts</i> has a primary SOC assignment of SOC <i>Congenital, familial and genetic disorders</i> and a secondary SOC assignment of SOC <i>Hepatobiliary disorders</i> | The secondary SOC assignment for these terms is their “site of manifestation” SOC |

| Type of Disorder | Primary SOC Rule   | Example  | Comment   |
|------------------|--|--|---|
| Neoplastic       | All terms for malignant and benign neoplasms (except cysts and polyps) have as their primary SOC assignment SOC <i>Neoplasms benign, malignant and unspecified (incl cysts and polyps)</i> | PT <i>Skin cancer</i> has a primary SOC assignment of SOC <i>Neoplasms benign, malignant and unspecified (incl cysts and polyps)</i> and a secondary SOC assignment of SOC <i>Skin and subcutaneous tissue disorders</i> | <b>Cyst</b> and <b>polyp</b> terms are an exception to this rule. The primary SOC assignment for cyst and polyp terms is the “site of manifestation” SOC, and the secondary SOC is SOC <i>Neoplasms benign, malignant and unspecified (incl cysts and polyps)</i> |
| Infectious       | All terms for infectious disorders have as their primary SOC assignment SOC <i>Infections and infestations</i>   | PT <i>Enterocolitis infectious</i> has a primary SOC assignment of SOC <i>Infections and infestations</i> and a secondary SOC assignment of SOC <i>Gastrointestinal disorders</i>  | The secondary SOC assignment for these terms is their “site of manifestation” SOC   |

If a PT links to more than one of these three SOC, the following priority is used to determine the primary SOC:

- SOC *Congenital, familial and genetic disorders*
- SOC *Neoplasms benign, malignant and unspecified (incl cysts and polyps)*
- SOC *Infections and infestations*

#### 2.5.3.2 Non multiaxial SOC

Terms in the following three SOC do not have multiaxial links:

SOC *Investigations*

SOC *Surgical and medical procedures*

SOC *Social circumstances*

This is important when designing queries and other retrieval strategies because one cannot rely on multiaxiality to locate all terms of interest in MedDRA.

## Example

| <b>Impact of Non Multiaxial SOCs on Data Queries</b>  |
|---|
| <p>When querying a database for events or cases of thrombocytopenia, data coded to PTs in SOC <i>Blood and lymphatic system disorders</i> is a logical starting point. Additionally, data coded to terms in SOC <i>Investigations</i> – such as PT <i>Platelet count decreased</i> – and data coded to terms in SOC <i>Surgical and medical procedures</i> - such as PT <i>Platelet transfusion</i> – could also be of interest. Neither of these PTs has a link to SOC <i>Blood and lymphatic system disorders</i>.</p> <p><b>Failure to consider data coded in the non multiaxial SOCs could lead to incomplete analysis of thrombocytopenia.</b></p> |

As noted above, terms for test results are in SOC *Investigations* and do not have multiaxial links to terms for corresponding medical conditions. Keep this in mind when reviewing tables and data listings of MedDRA coded data.

## Example

| <b>Terms for Test Results in SOC <i>Investigations</i></b>   |
|--|
| <p>When querying a database for events or cases of hepatic abnormalities, data coded to PTs in SOC <i>Hepatobiliary disorders</i> is a logical starting point. Additionally, data coded to terms in SOC <i>Investigations</i> – such as PT <i>Liver function test abnormal</i> – and data coded to terms in SOC <i>Surgical and medical procedures</i> - such as PT <i>Liver transplant</i> – could also be of interest. Neither of these PTs has a link to SOC <i>Hepatobiliary disorders</i>.</p> <p><b>Failure to consider data coded in the non multiaxial SOCs could lead to incomplete analysis.</b></p> |

Figure 2 further illustrates the impact of data coded as test results vs. the corresponding medical condition.

### 2.5.3.3 Clinically related PTs

Clinically related PTs might be overlooked or not recognized as belonging together because they might be in different groupings within a single SOC or they may be located in more than one SOC (see Section 2.5.3).

## Example

| <b>Similar Skin Conditions in Different Groupings</b> |
|---|
| <i>HLGT Epidermal and dermal conditions</i>           |
| <i>HLT Bullous conditions</i>                         |
| <i>PT Stevens-Johnson syndrome</i>                    |
| <i>PT Toxic epidermal necrolysis</i>                  |
| <i>HLT Exfoliative conditions</i>                     |
| <i>PT Dermatitis exfoliative</i>                      |
| <i>PT Dermatitis exfoliative generalised</i>          |
| <i>PT Nikolsky's sign</i>                             |
| <i>PT Skin exfoliation</i>                            |

Example as of MedDRA Version 23.0

The frequency of a medical concept may be underestimated if the above points are not considered; this may impact interpretation of data (see Section 3.2).

MedDRA SOCs group terms by body systems, aetiologies and specialised purposes. Data may be coded to terms in SOCs that had not been anticipated by the user. Keep in mind the potential impact of multiaxiality on frequencies of the medical condition of interest.

## Example

| <b>Preferred Term</b>              | <b>Primary SOC</b>  |
|------------------------------------|---|
| <i>Post procedural haemorrhage</i> | <i>Injury, poisoning and procedural complications</i>       |
| <i>Chest pain</i>                  | <i>General disorders and administration site conditions</i> |

## 2.6 MedDRA Versioning

MedDRA is updated twice yearly. Version “X.0” contains both simple and complex changes; version “X.1” contains only simple changes.

Organisations should be aware of the types of MedDRA changes for their possible impact on data output.

| <b>Types of MedDRA Changes</b>  |   |
|---|---|
| <b>Simple Changes</b>   | <b>Complex Changes</b>  |
| Add a PT (new medical concept)<br>Move an existing PT from one HLT to another<br>Demote a PT to LLT level<br>Add or remove a link to an existing PT<br>Add an LLT<br>Move an existing LLT from one PT to another<br>Promote an LLT to PT level<br>Make a current LLT non-current or a non-current LLT current<br>Changing the primary SOC allocation<br>Changes to SMQs | Add or change multiaxial links<br>Add new grouping terms<br>Merge existing grouping terms<br>Restructure a SOC<br>Add a new SOC |

Both simple and complex changes impact retrieval and presentation strategies. Users should read the documentation provided with each MedDRA release, especially the *What's New* document. The MSSO and JMO provide tools to assist the user in comparing the changes between MedDRA versions. The Version Report (provided by the MSSO and JMO) is a spreadsheet listing all changes between the current version of MedDRA and the one previous to it; this spreadsheet is provided with each new release of MedDRA. The MSSO also provides the MedDRA Version Analysis Tool (MVAT) that facilitates identification and understanding of the impact of changes between any two MedDRA versions, including non-consecutive ones (see Appendix, Section 6.1 of this document; also, see Section 4.1.1 of the *MedDRA Term Selection: Points to Consider* document).

Organisations should plan and document their strategy for handling MedDRA version updates. When planning or performing data retrieval and presentation, the MedDRA version used should be documented.

Keep in mind that MedDRA changes may impact previous data retrieval approaches and results, including event frequencies.



## Example

| <b>Impact of Version Changes – Demoted PT</b>  |
|--|
| <p>PT <i>Fractured ischium</i> was included in a query developed using terms in MedDRA Version 22.1. If the query had been re-run on data using MedDRA Version 23.0, these events would not have been found at the PT level because PT <i>Fractured ischium</i> had been demoted to an LLT and linked to PT <i>Pelvic fracture</i>.</p> <p>See Figure 3.</p> |

Example as of MedDRA Version 22.1 and 23.0

## Example

| <b>Impact of Version Changes – Change of Primary SOC Assignment</b>   |
|---|
| <p>PT <i>Vascular cognitive impairment</i> had a primary link to SOC <i>Psychiatric disorders</i> and secondary links to SOC <i>Nervous system disorders</i> and SOC <i>Vascular disorders</i> in MedDRA Version 22.1. In Version 23.0, the primary SOC assignment was changed to SOC <i>Nervous system disorders</i> and the secondary assignments were to SOC <i>Psychiatric disorders</i> and SOC <i>Vascular disorders</i>. In a primary SOC output of data, PT <i>Vascular cognitive impairment</i> will seem to have “disappeared” from SOC <i>Psychiatric disorders</i>.</p> |

Example as of MedDRA Version 22.1 and 23.0

Terms used to construct queries should be in the same MedDRA version as the data being queried. An organisation’s legacy data may be coded in more than one version of MedDRA. New terms may have been included in a new query built in a newer MedDRA version; depending upon the organisation’s versioning method, these new terms might not be present in the older data. This could lead to search results that are incomplete.

A search built with terms of an earlier MedDRA version (e.g., used previously on a now closed study) might not identify all relevant data in an integrated safety summary (ISS) containing data coded in a later version of MedDRA. Queries stored in an organisation’s system should be updated to the appropriate version of MedDRA before using them on new data.

Advice on how an organisation should handle new MedDRA versions is not within the scope of this document. Some databases may contain data of multiple studies coded in different versions of MedDRA. This may impact aggregation of those data (e.g., in an ISS). Refer to the MedDRA website for the MedDRA Best Practices for

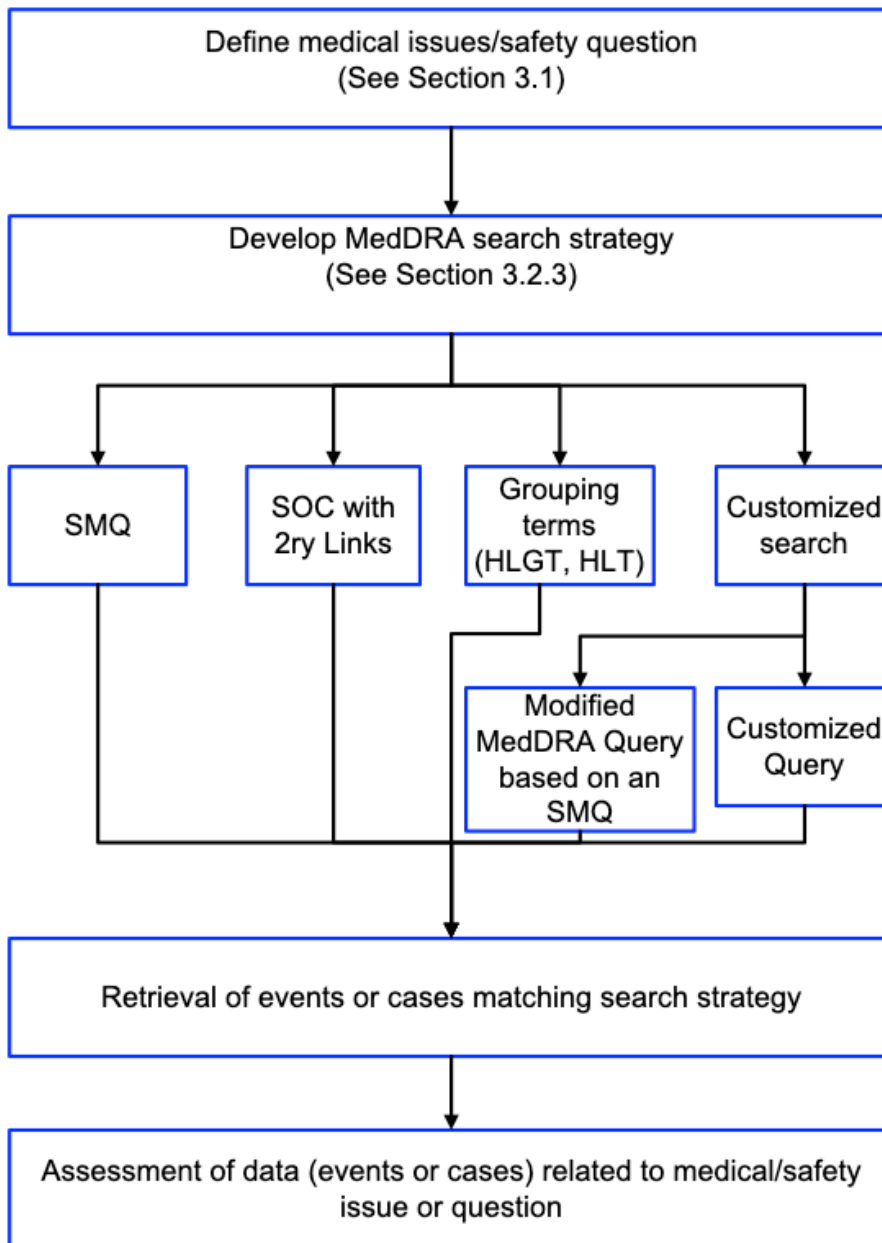
more information on versioning options for clinical trial and post-marketing data (see Appendix, Section 6.1).

## **SECTION 3 – GENERAL QUERIES AND RETRIEVAL**

### **3.1 General Principles**

Data retrieval is performed for summary and analysis of clinical trial data, pharmacovigilance, medical information questions and for a number of other purposes. The search strategies, methods and tools used to retrieve data might differ based on the intended use of the output.

A general approach for data retrieval is outlined in the chart below.



Prior to data retrieval, there may be known or potential safety issues that need detailed investigation. Information from pre-clinical studies, clinical trials, post-marketing surveillance, class effects of similar products, and regulatory queries may identify areas of possible focus; these may affect the strategy for aggregating search terms, the methodology, and the way data are displayed.

Be aware of database characteristics, organisation-specific data entry conventions, data sources, the size of the database, and the version of MedDRA used for coding all data. Archived searches may be available to the user, especially those used in pharmacovigilance; these may be suitable for use if updated.

When presenting adverse event data, it is important to display and to group related events (i.e., events that represent the same condition of interest) so that the true occurrence rate of an event is not obscured. **Search strategies should be documented.** The search output alone may not suffice for data assessment (e.g., frequency of a condition). Search results should be evaluated against the question originally posed.

Sorting related events into categories can be challenging. A search that is too narrowly focused might exclude events of potential relevance; a search that is too broad might make it difficult to identify a trend or signal. Careful interpretation is required when grouping terms that correspond to a potential event or medical condition for analysis (whether a syndrome or not). The purpose is to identify trends that may require further analysis, including review of individual cases. For complex queries, create a data analysis plan including a definition of the medical condition of interest. An interdisciplinary discussion might be helpful to identify the most suitable methods and tools relevant to the query.

These principles may apply to the types of searches listed in the table below:

Example

| <b>Types of Searches – Application of General Principles</b>  |
|---|
| Safety profile overview in a summary report, Periodic Safety Update Report (PSUR), ISS, etc.        |
| Comparing frequencies of ARs/AEs (reporting rates for spontaneous reports or incidence for studies) |
| Analysis of a specific safety concern   |
| Identifying patient subpopulations at risk (search of medical history)                              |

### **3.1.1 Graphical displays**

Graphical displays can be useful especially with large datasets. Such displays allow quick visual representation of potential signals. Organisations are encouraged to use graphs for data display. Histograms, bar charts, and pie charts can be useful as can more complex, statistically-derived displays (e.g., data mining algorithms). Examples of these types of displays are in the Appendix, Section 6.2.

### **3.1.2 Patient subpopulations**

For data retrieval for specific subpopulations such as those based on age or gender, it is necessary to refer to individual database fields for demographics.

### 3.2 Overall Presentation of Safety Profiles

The aims of an overall safety profile presentation are to:

- Highlight distribution of ARs/AEs
- Identify areas for in depth analysis

Present the data in a way that allows for easy recognition of patterns of terms potentially related to the relevant medical conditions. There are various ways to do this ranging from a full listing of terms to sophisticated statistical approaches such as data mining techniques (for reference, see ICH E2E: Pharmacovigilance Planning Document; listed in the Appendix, Section 6.1).

Historically, the standard approach has been to display data by Body System (or System Organ Class) and Preferred Term corresponding to SOCs and PTs in MedDRA. Due to MedDRA's unique characteristics (multiaxiality, granularity), this PT-SOC approach may need to be augmented with other types of data outputs (e.g., secondary SOC output, display by grouping terms [HLTs, HLGs], etc.), depending on the reason for the output. For example, if a number of reports describe a similar medical condition, they could be represented by:

- Many different PTs (dilution of signal)
- Different grouping terms
- Different SOCs

SOCs where the user would not intuitively expect them (e.g., *SOC General disorders and administration site conditions*, *SOC Pregnancy, puerperium and perinatal conditions*, *SOC Injury, poisoning and procedural complications*, *SOC Infections and infestations*). See examples in the table below:

**PTs with Primary SOC *General disorders and administration site conditions* and Secondary SOC *Cardiac disorders***

PT *Chest discomfort*  
PT *Chest pain*  
PT *Oedema peripheral*  
PT *Sudden death*  
PT *Localised oedema*  
PT *Oedema due to cardiac disease*  
PT *Peripheral oedema neonatal*  
PT *Cardiac death*

Example as of MedDRA Version 23.0

### **3.2.1 Overview by primary System Organ Class**

This overview is recommended as a first step in data retrieval and for planning of further analysis.

Display of all data ensures that all events will be seen and may be useful to identify data clusters by SOC. If the hierarchy is also displayed, clusters may occur at the HLG or HLT levels. For a small dataset, this display by primary SOC may be all that is necessary.

- Objectives:
  - Include all events (none are omitted)
  - Display all data in the entire MedDRA hierarchy
- Method:

The primary SOC view including HLGs, HLTs and PTs can be used for standard tables (clinical trials and post-marketing data) and for cumulative summaries (post-marketing data). Line listings (both clinical and post-marketing data) can also be displayed by primary SOC and PT. Depending on the reason for the output, it might be beneficial to use the primary SOC and PT display; for large datasets, display by SOC **and** by grouping terms (HLGs and HLTs) may be preferable. Figure 4 is an example of such an output.

The Internationally Agreed Order of SOC's was developed for consistency irrespective of language or alphabet (see Figure 5). The SOC order was based upon the relative importance of each SOC in AR/AE reports (see also the MedDRA *Introductory Guide* and MedDRA ASCII files). Use of the Internationally Agreed Order may be applicable to certain regulatory functions, e.g., the Summary of Product Characteristics guideline. Organisations that share data should agree on the order of SOC's when preparing data for presentation.

Data displays in tables or in graphical presentations may facilitate understanding by the viewer. Figures 6, 7 and 8 are examples of such displays.

Figures 9a and 9b display data for one compound in two patient populations. Within each patient population, the reports are split by SOC and by reporter. The upper bar of each pair represents numbers of reports from consumers (blue), and the lower bar represents reports from health care professionals (red).

If further detail is needed, adverse events can be displayed by PT with decreasing frequency.

In depth analysis requires medical expertise to define terms that should be aggregated.

➤ Benefits:

- Provides an overview of data distribution; helps identify areas of special interest that may need in depth analysis
- Grouping terms aggregate related PTs, facilitating identification of medical conditions of interest
- A PT will be displayed only once, preventing over-counting of terms
- A primary SOC overview may be the only form of data display necessary for a small dataset

➤ Limitations:

- Because it is based on a PT-to-primary SOC assignment, there may be incomplete groupings of terms for a medical condition or syndrome as such terms may be distributed among different SOC's
- Events may not be found where the user expects them due to MedDRA placement rules
- Potential for a lengthy data output when applied to large datasets

### 3.2.2 Overall presentations of small datasets

When the safety profile consists of a small list of PTs (e.g., early in clinical development), a display of these PTs may be adequate. Figure 10 is an example of this.

### 3.2.3 Focused searches

Focused searches may be useful for further investigation of medical concepts of interest. For example, a focused search may be used to determine the number of cases or events of interest in response to a regulatory query.

In certain situations, such as those listed below (note that this list is not all-inclusive), users may wish to design a specific search in addition to the Overview by Primary System Organ Class (see Section 3.2.1).

- Further examination of clusters seen in Primary SOC output
- Previously identified safety concerns (e.g., known class effects, results from toxicology and animal studies, etc.)
- Monitoring events of special interest
- Responding to regulatory queries

Below are listed options for focused search approaches. The order of applying these approaches may depend on resources, expertise, systems or other factors.

#### 3.2.3.1 Focused searches by secondary SOC assignments

This focused search augments the Overview by Primary System Organ Class (see Section 3.2.1) by addressing secondary SOC assignments, thus providing a more comprehensive view of the data and taking advantage of MedDRA's multiaxiality.

##### ➤ Method:

The method used for a focused search by secondary SOC assignment may depend on the database characteristics of the organisation. Options include:

- Query of the SOC, HLG and HLT levels to include both the primary and secondary SOC assignments in the display
- Output PTs in their secondary SOC locations programmatically (see Figure 11)
- If the database does not allow automated output by secondary SOC, then perform the query using available processes (e.g., programming a list of all individual PTs in the primary and secondary SOC locations)



- The MSSO Desktop and Web-Based browsers provide users with the option to display the secondary SOC paths of terms exported from search/research bin results or from terms uploaded using the Hierarchy Analysis feature. These browser features thus allow users to view and export secondary SOC assignments in a simple spreadsheet format without the need for any special programming.

Example

| <b>Programming a List of PTs in Primary and Secondary SOC Locations</b>   |
|---|
| <p style="margin-left: 20px;"><i>SOC Eye disorders</i></p> <p style="margin-left: 40px;"><i>HLGT Vision disorders</i></p> <p style="margin-left: 60px;"><i>HLT Visual pathway disorders</i></p> <p style="margin-left: 80px;"><i>PT Chiasma syndrome</i></p> <p style="margin-left: 80px;"><b>PT Optic nerve compression (primary SOC location)</b></p> <p style="margin-left: 80px;"><b>PT Optic nerve disorder (primary SOC location)</b></p> <p style="margin-left: 80px;"><b>PT Optic neuropathy (primary SOC location)</b></p> <p style="margin-left: 80px;"><b>PT Toxic optic neuropathy (primary SOC location)</b></p> <p style="margin-left: 80px;"><i>PT Visual cortex atrophy</i></p> <p style="margin-left: 80px;"><i>PT Visual pathway disorder</i></p> <p style="margin-left: 40px;"><b>3 of 7 PTs are primary to SOC Nervous system disorders</b></p> |

Example as of MedDRA Version 23.0

➤ Benefits:

Multiaxial links enhance the utility of the grouping terms. This method overcomes the primary SOC limitations as described under Section 3.2.1.

➤ Limitations:

- Still displays only terms that are represented in one SOC or HLG/HLT which may not include all terms related to a medical condition
- This method of display of PTs by both primary and secondary SOC assignments could lead to double counting of cases/events

## SECTION 4 – STANDARDISED MedDRA QUERIES

### 4.1 Introduction

Standardised MedDRA Queries (SMQs) were created to standardise identification and retrieval of safety data.

Since 2003, SMQs were jointly developed by the Council for International Organizations of Medical Sciences (CIOMS) and ICH (including MSSO and JMO) representing both industry and regulatory authorities. An SMQ is a grouping of terms from one or more SOCs that relate to a defined medical condition or area of interest. The terms included relate to signs, symptoms, diagnoses, syndromes, physical findings, laboratory and other physiologic test data, etc. that are associated with the medical condition or area of interest.

In 2020, the CIOMS SMQ Working Group completed work on the last SMQ in its development pipeline, bringing the total number of SMQs developed by the group to 107. Beginning with *COVID-19 (SMQ)* in MedDRA Version 23.1, the MedDRA MSSO is responsible for the *ad hoc* development of new SMQ topics in coordination with international experts from regulatory authorities and industry.

Users should carefully read the *Introductory Guide for Standardised MedDRA Queries (SMQs)* before applying an SMQ to fully understand the scope of the SMQ and to properly apply search options such as algorithms and weightings.

### 4.2 SMQ Benefits

As with all MedDRA-based queries, users of SMQs should be aware of several factors that may influence data retrieval including database characteristics, data conversion processes, coding conventions, and MedDRA versioning. For more details, see Section 3.1.

- SMQ benefits include:
  - Application across multiple therapeutic areas
  - Validated reusable search logic
  - Standardised communication of safety information
  - Consistent data retrieval
  - Maintenance by MSSO and JMO

### 4.3 SMQ Limitations

- SMQs do not cover all medical topics or safety issues
- SMQs evolve and undergo further refinement in the production phase

### 4.4 SMQ Modifications and Organisation-Constructed Queries

If any modifications are made to term content or structure of an SMQ, it can no longer be called an “SMQ” but it should instead be referred to as a “modified MedDRA query based on an SMQ”. See Section 5.1 for further details on SMQ modification.

**Under no circumstances should a query constructed for the specific need of an organisation be called an “SMQ” by its originator.** This is to ensure that there is no confusion with the ICH-endorsed SMQs applied by other MedDRA users. Any alternate name for the organisation-constructed query is acceptable as long as it could not be potentially confused with an ICH-endorsed SMQ.

### 4.5 SMQs and MedDRA Version Changes

Each SMQ relates to a specific MedDRA version. SMQs are part of each new MedDRA release, are maintained by MSSO and JMO, and correspond to the terms present in that version of MedDRA. The SMQ version should always correspond to the MedDRA version of the data being searched.

As with all searches of MedDRA-based data, it is important to document the MedDRA and SMQ versions used.

Changes to SMQs that can occur with each MedDRA version include (but are not limited to) the following:

- Addition of PTs
- Inactivation of a PT (i.e., effectively “removing” a PT from an SMQ)
- Change of term scope (e.g., a narrow term becomes a broad term)
- Restructuring of an SMQ (e.g., change in the hierarchical position of an SMQ)
- Creation of a new SMQ

For a full description of the types of changes that can occur to SMQs, please refer to the MedDRA “Change Request Information” document (see Appendix, Section 6.1). Changes introduced with each new version are documented in the “What’s New” document for each MedDRA version. (The cumulative changes are contained within the ASCII files in the fields called “Term\_addition\_version” and “Term\_last\_modified\_version”).

The MedDRA version of the SMQ and the coded data being searched should be the same because mismatches could produce unexpected results. For example, if an SMQ from an older version of MedDRA is applied to data coded in a more recent version, data coded to terms that are not present in the older SMQ would not be retrieved.

Example

| <b>Consequence of Version Mismatch of Coded Data and SMQ</b>  |
|---|
| PT <i>Hormone receptor positive breast cancer</i> was added to SMQ <i>Breast malignant tumours</i> in MedDRA Version 23.0. Using Version 22.1 of this SMQ – which does not contain this PT – would fail to identify cases coded to this term in a database using MedDRA Version 23.0. |

Example as of MedDRA Version 22.1 and 23.0

#### **4.6 SMQs – Impact of MedDRA Legacy Data Conversion**

The conversion method for data originally coded in another terminology (e.g., COSTART) also impacts the application and output of SMQs. See Section 2.1.2, *Impact of data conversion method*.

#### **4.7 SMQ Change Requests**

Users are encouraged to submit Change Requests to MSSO and JMO to improve the utility of SMQs. A justification (and possibly testing data) for a submitted Change Request must be provided. The MSSO may require more time to evaluate SMQ Change requests than regular MedDRA Change Requests.

Before submitting an SMQ Change Request, users should review the SMQ documentation for inclusion and exclusion criteria of the SMQ.

#### **4.8 SMQ Technical Tools**

The MSSO browsers (the Desktop, Web-Based, and Mobile browsers) allow for searching and viewing the contents of SMQs and they include additional details such as the SMQ description (definition) and development notes. In addition, the Desktop and Web-Based browsers have an SMQ Analysis feature which allows users to upload a set of coded data and apply SMQs to it.

An Excel spreadsheet containing the terms in each production SMQ is available from MSSO and JMO (see Appendix, Section 6.1). This spreadsheet allows a user to transfer SMQ terms to query tools. File specifications related to SMQs are found

in the “MedDRA Distribution File Format Document” supplied with each MedDRA version.

The MedDRA website has a list of some system tools that provide technical support for SMQs (see Appendix, Section 6.1).

## 4.9 SMQ Applications

SMQs were developed to address the high granularity and unique features of MedDRA and to maximise the likelihood that all terms related to a specific medical condition of interest are identified.

The user should first review the list of available SMQs to determine which of them may be applicable to the question being asked. If an SMQ seems applicable, the user should check the documentation in the SMQ Introductory Guide to understand the purpose and definition of the SMQ. The user may also wish to review the term contents of the SMQ.

Following application of the selected SMQ on coded data, search results (i.e., retrieved data) should then be evaluated against the question originally posed. The search output alone may not be sufficient for data assessment (e.g., frequency of a condition). Define and document criteria for case evaluation.

Generally, more cases/events will be retrieved than will eventually be subjected to analysis due to “noise”. This is a more significant consideration for “broad” searches but in principle also applies to “narrow” searches (see Section 4.10.1).

### 4.9.1 Clinical trials

SMQs may be applied in the clinical trial setting – especially for aggregate data – where the safety profile has yet to be fully established. In this instance, most (if not all) available SMQs may be used, possibly on a routine basis.

Alternatively, a user can apply an SMQ (or SMQs) that relates to a previously identified area of interest (e.g., from pre-clinical data or class effect) for further evaluation.

Example

| Targeted Safety Study  |
|--|
| When developing a data analysis plan for a targeted safety study, consider using the narrow terms of an SMQ to aggregate events of interest. |

## 4.9.2 Post-marketing

### 4.9.2.1 Focused searches

A specific SMQ or a selection of SMQs may be used to retrieve relevant cases for subsequent medical review.

Example

| <b>Emerging Safety Signal</b>  |
|--|
| A company suspects an emerging signal of pancreatitis for a new HIV product. SMQ <i>Acute pancreatitis</i> can be applied to the data. |

### 4.9.2.2 Signal detection

The entire set of SMQs may be used on the database for signal detection. The user may wish to use the narrow terms or more specific levels of hierarchical SMQs (i.e., a sub-search SMQ) to minimise dilution of the signal.

### 4.9.2.3 Single case alert

SMQs may be used to create a “watch list” (e.g., an automated notification system) to alert the user of incoming cases needing urgent review.

Example

| <b>Single Case Alert</b>  |
|---|
| A medical issue of interest needs to be communicated to a regulatory authority as part of an agreed risk management plan. The SMQ narrow search or more specific levels of a hierarchical SMQ may be applied to identify potential cases of interest. |

### 4.9.2.4 Periodic reporting

SMQs may help aggregate relevant cases for ongoing review of specific safety issues in periodic safety reports. SMQs may also be used for other routine reviews of aggregate data (e.g., reports of lack of efficacy) in the context of a periodic report.

## 4.10 SMQ Search Options

Some SMQs have options that may be used to refine a particular search. The most common option is use of narrow and broad search terms. By definition, a broad search includes both narrow and broad terms.

Some SMQs are hierarchical (i.e., contain one or more sub-searches). Other SMQs use algorithms, and in one case (SMQ *Systemic lupus erythematosus*), weightings are assigned to particular terms for signs, symptoms and laboratory results to help identify cases.

#### 4.10.1 Narrow and broad searches

Most SMQs have narrow and broad PTs. The narrow PTs have a greater likelihood of identifying only events of interest (high specificity) while the broad terms are intended to identify additional possible events (high sensitivity). Some events retrieved by the broad search terms may, upon further review, not relate to the condition of interest. The user can select the scope of the search (narrow or broad) that is most applicable to the question being asked. Figure 12 is an example of output of narrow and broad searches.

When a compound is in early phase development or has only recently been marketed, it may be advisable to use the broad search.

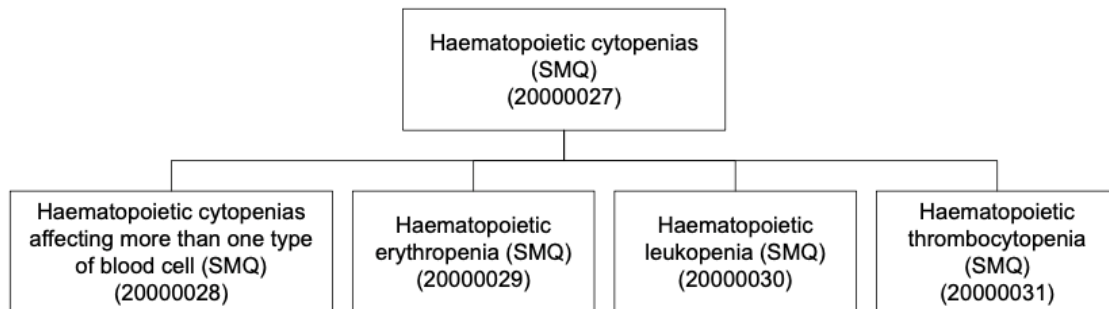
Example

| Use of Broad Search   |
|---|
| If evaluating an emerging signal of lactic acidosis using SMQ <i>Lactic acidosis</i> , narrow terms may be applied to identify events where the specific diagnosis has been reported; however, events of reported signs and symptoms would not be retrieved. If there is additional need to find cases where no specific diagnosis (but mainly signs and symptoms) have been reported, then a broad search (i.e., narrow + broad search terms) should be applied. |

#### 4.10.2 Hierarchical SMQs

Several SMQs have a hierarchical structure (one or more levels of sub-searches of increasing specificity). The user can select the search that is most applicable to the question being asked or a combination of sub-search SMQs as needed.

The SMQ Introductory Guide has explanatory notes on the appropriate use of each hierarchical SMQ. An example of a hierarchical SMQ is illustrated below (SMQ *Haematopoietic cytopenias*).



### Example

| Use of SMQ Hierarchy   |
|--|
| <p>The medical condition of interest is thrombocytopenia. SMQ <i>Haematopoietic cytopenias</i> may be too inclusive because sub-searches for decreases of other hematopoietic cell lines (e.g., SMQ <i>Haematopoietic leukopenia</i>) are included. A user may wish to select only the sub-search SMQ <i>Haematopoietic thrombocytopenia</i> in this instance.</p> |

### 4.10.3 Algorithmic SMQs

An algorithm provides for a combination of terms which – if retrieved in a single case – are more likely to identify a case of interest than isolated broad search terms (see table below). The broad terms of algorithmic SMQs are subdivided into **categories** that could be groupings of organ-specific signs or symptoms, laboratory terms, etc. (Note: the broad search categories are labeled B, C, D, etc.) Using an algorithm may reduce the amount of “noise” (i.e., non-relevant cases).

Using an algorithmic SMQ without applying the algorithm (i.e., simply applying the narrow and broad searches) will yield different results from those obtained using the algorithm.



Example

| <b>Algorithmic SMQ (SMQ <i>Anaphylactic reaction</i>)*</b> |  |  |
|--|--|--|
| <b>Category B – Upper airway/Respiratory</b>               | <b>Category C – Angioedema/Urticaria, etc.</b> | <b>Category D – Cardiovascular/Hypotension</b> |
| <i>Acute respiratory failure</i>                           | <i>Allergic oedema</i>                         | <i>Blood pressure decreased</i>                |
| <i>Asthma</i>  | <i>Angioedema</i>                              | <i>Blood pressure diastolic decreased</i>      |
| <i>Bronchial oedema</i>                                    | <i>Erythema</i>                                | <i>Blood pressure systolic decreased</i>       |

Algorithm:

- Case = A (Narrow terms – not included in the table)
- Or term from Category B **and** term from Category C
- Or term from **either** Category B or Category C **plus** term from Category D

\* Not all terms in these categories are listed in the table

SMQ *Systemic lupus erythematosus* is an algorithmic SMQ with assigned weights for its included PTs (e.g., PT *Pleural effusion* = 3); a total weighted score greater than 6 suggests a case of interest.

Users should not assume that all software tools support algorithmic SMQs.

#### 4.11 SMQ and MedDRA Grouping Terms

Data retrieved using MedDRA grouping terms (HLGTs, HLTs) may differ from those retrieved using a related SMQ.

Example

| <b>Comparison – SMQ and Grouping Terms</b>  |
|---|
| Cardiac arrhythmia is a suspected issue (e.g., by review of a primary SOC output of all data). If events retrieved by using HLGT <i>Cardiac arrhythmias</i> are compared to those retrieved by SMQ <i>Cardiac arrhythmias</i> , more events may be retrieved by the SMQ because it includes additional terms from other SOC such as SOC <i>Investigations</i> . |

## SECTION 5 – CUSTOMISED SEARCHES

MedDRA allows for a variety of searching options as described above. However, there will be situations when a customised search is needed.

### 5.1 Modified MedDRA Query Based on an SMQ

Do not modify the term content or structure of an SMQ unless there is a compelling reason to do so since altering it in any way makes it non-standard (see Section 4.4).

If an SMQ is modified in any way, it should be referred to as a “modified MedDRA query based on an SMQ”. All modifications to the original SMQ should be documented.

If a modified MedDRA query based on an SMQ is to be used on an ongoing basis, version updates and maintenance of the query are the responsibility of the organisation that created it.

Example

| Modified MedDRA Queries based on SMQs               |   |
|---|---|
| Additional PTs are needed                           | A product is being investigated for a possible safety signal of dementia, and the user wishes to use SMQ <i>Dementia</i> . For this particular product, PT <i>Disturbance in attention</i> may be needed.   |
| Exclusion of PTs                                    | An antipsychotic product is being investigated for potential QT prolongation and also has a well-described association with hypotension and fainting. When using SMQ <i>Torsade de pointes/QT prolongation</i> (broad search), the user may wish to exclude PT <i>Syncope</i> to prevent excess “noise” in data retrieval.                    |
| Changing the scope (narrow or broad) of an SMQ term | A product is being investigated for the potential for hyperglycaemia and diabetes mellitus. SMQ <i>Hyperglycaemia/new onset diabetes mellitus</i> has PT <i>Increased insulin requirement</i> as a <b>broad</b> search term. For this query, it may be useful to include PT <i>Increased insulin requirement</i> in the <b>narrow</b> search. |

## 5.2 Customised Queries

Consider these points when constructing a customised query for MedDRA-coded data:

- Those responsible for constructing a customised query should:
  - Have medical knowledge
  - Know the structure and characteristics of MedDRA (e.g., hierarchy, multiaxiality) and the general content of MedDRA groupings (SOCs, HLGTs, and HLTs)
  - Understand the characteristics and structure of the data
- The specificity of the search should be defined.
- Initial focus should be on SOCs related to the condition of interest. For example, a customised search for a renal condition should start with SOC *Renal and urinary disorders*.
- The non multiaxial SOCs (SOC *Investigations*, SOC *Surgical and medical procedures* and SOC *Social circumstances*) should always be reviewed. Also, it may be useful to review terms in other SOCs that are not organ systems (e.g., SOC *General disorders and administration site conditions*, SOC *Injury, poisoning and procedural complications* and SOC *Pregnancy, puerperium and perinatal conditions*).
- It may be useful to identify relevant query terms by the following approaches:
  - A “bottom-up” survey of MedDRA (terms at the LLT and PT levels initially)
  - A “top-down” survey of MedDRA (starting at the SOC level and drilling down through the hierarchy)
- Consider looking at secondary links for multiaxial terms since additional relevant query terms could be found. For example, PT *Dyspnoea* can be found with other respiratory symptoms PTs in its primary SOC *Respiratory, thoracic and mediastinal disorders*, and it can also be found with related cardiac symptoms in its secondary SOC *Cardiac disorders*.
- Include grouping terms (HLGTs, HLTs) when possible (remembering the caveats described in Section 2.5.1).
- In general, queries should be built on PTs and grouping terms. Unless very specific concepts (e.g., bacterial species) are needed, avoid using LLTs to build queries.

- Consider saving the customised query for future use; maintenance is necessary for MedDRA version changes.
- A customised query that may be useful to other MedDRA users can be submitted to the MSSO as a Change request for possible development as an SMQ.

## SECTION 6 – APPENDIX

### 6.1 Links and References

The following documents and tools can be found on the MedDRA website: ([www.meddra.org](http://www.meddra.org)):

- MedDRA Term Selection: Points to Consider document (also available on the JMO website: [www.pmrj.jp/jmo/](http://www.pmrj.jp/jmo/))
- MedDRA Term Selection: Points to Consider Condensed Version
- MedDRA Data Retrieval and Presentation: Points to Consider Condensed Version
- MedDRA Points to Consider Companion Document (also available on the JMO website: [www.pmrj.jp/jmo/](http://www.pmrj.jp/jmo/))
- MedDRA Introductory Guide
- Introductory Guide for Standardised MedDRA Queries (SMQs)
- MedDRA Change Request Information document
- MedDRA Web-Based Browser \*
- MedDRA Mobile Browser\*
- MedDRA Desktop Browser
- MedDRA Version Report (lists all changes in new version) \*
- MedDRA Version Analysis Tool (compares any two versions) \*
- MedDRA Best Practices
- Transition Date for the Next MedDRA Version
- Production SMQ spreadsheet\*
- List of system tools that support SMQs

\* Requires user ID and password to access

The following document can be found on the ICH website ([www.ich.org](http://www.ich.org)):

- ICH E2E: Pharmacovigilance Planning

The following report can be found on the CIOMS website ([www.cioms.ch](http://www.cioms.ch))

- Development and Rational Use of Standardised MedDRA Queries (SMQs): Retrieving Adverse Drug Reactions with MedDRA. Second edition.

## 6.2 Figures

| <b>OTHER TERMINOLOGY<br/>PREFERRED TERMS</b> | <b>No. of<br/>EVENTS</b> | <b>MedDRA Version 23.0<br/>PREFERRED TERMS</b> | <b>No. of<br/>EVENTS</b> |
|--|--------------------------|--|--------------------------|
| Infection                                    | 15                       | <i>Upper respiratory tract infection</i>       | 7                        |
|  |                          | <i>Nasopharyngitis</i>                         | 2                        |
|  |                          | <i>Infection</i>                               | 1                        |
|  |                          | <i>Lower respiratory tract infection</i>       | 4                        |
|  |                          | <i>Skin infection</i>                          | 1                        |
| Abdominal pain                               | 9                        | <i>Abdominal pain</i>                          | 4                        |
|  |                          | <i>Abdominal pain upper</i>                    | 3                        |
|  |                          | <i>Abdominal tenderness</i>                    | 2                        |
| Accidental injury                            | 4                        | <i>Injury</i>                                  | 1                        |
|  |                          | <i>Skin laceration</i>                         | 1                        |
|  |                          | <i>Ligament sprain</i>                         | 1                        |
|  |                          | <i>Back injury</i>                             | 1                        |

Figure 1 – How data coded to a single concept from another terminology may be expressed by several PTs in MedDRA. Example as of MedDRA Version 23.0.

| Reported Event<br>(% subjects) | OTHER TERMINOLOGY          |  | MedDRA Version 23.0                      |   |
|--------------------------------|----------------------------|--|--|---|
|                                | Coded Term<br>(% subjects) | Body System/SOC<br>(% subjects)                    | PT<br>(% subjects)                       | SOC<br>(% subjects)                                     |
| Hyperglycaemia<br>(4.1)        | Hyperglycaemia<br>(10.5)   | Metabolism &<br>nutritional<br>disorders<br>(10.5) | <i>Hyperglycaemia</i><br>(4.1)           | <i>Metabolism<br/>and nutrition<br/>disorders</i> (4.1) |
| Increased blood<br>sugar (2.7) |                            |  |  |   |
| Glucose<br>increased (2.2)     |                            |  | <i>Blood glucose<br/>increased</i> (6.4) | <i>Investigations</i><br>(6.4)                          |
| Blood glucose<br>high (1.0)    |                            |  |  |   |
| Increasing<br>glucoses (0.5)   |                            |  |  |   |

Figure 2 – Multiple MedDRA terms may be used to code similar medical conditions included in a “disorder SOC”; associated laboratory findings are in SOC Investigations. Example as of MedDRA Version 23.0.

| Preferred Terms          | Events/Cases           |                        | Comment  |
|--------------------------|------------------------|------------------------|--|
|                          | MedDRA<br>Version 22.1 | MedDRA Version<br>23.0 |  |
| <i>Fractured ischium</i> | 15                     | 0<br>(no longer a PT)  | In MedDRA Version 22.1, <i>Fractured ischium</i> was a PT and in Version 23.0 it was demoted to an LLT under PT <i>Pelvic fracture</i> |
| <i>Pelvic fracture</i>   | 5                      | 20                     |  |

Figure 3 – Impact of MedDRA version changes – demotion of a PT

Example as of MedDRA Version 22.1 and 23.0

| SOC (System Organ Class)                           |                           | Number of all reactions* | Number of reactions* where outcome of report was fatal |
|--|---------------------------|--------------------------|--|
| HLGT   | PT                        |                          |  |
| <b>Nervous system disorders</b>                    |                           |                          |  |
| <b>Mental impairment disorders</b>                 |                           |                          |  |
| Mental impairment (excl dementia and memory loss)  | Disturbance in attention  | 1                        | 0  |
| <b>Movement disorders (incl parkinsonism)</b>      |                           |                          |  |
| Dyskinesias and movement disorders NEC             | Psychomotor hyperactivity | 2                        | 0  |
| Tremor (excl congenital)                           | Tremor                    | 3                        | 0  |
| <b>Neurological disorders NEC</b>                  |                           |                          |  |
| Disturbances in consciousness NEC                  | Somnolence                | 1                        | 0  |
| Neurological signs and symptoms NEC                | Dizziness                 | 1                        | 0  |
| <b>Seizures (incl subtypes)</b>                    |                           |                          |  |
| Seizures and seizure disorders NEC                 | Convulsion                | 2                        | 0  |
| <b><i>Nervous system disorders SOC Total</i></b>   |                           | <b>10</b>                | <b>0</b>   |
| <b>Psychiatric disorders</b>                       |                           |                          |  |
| <b>Anxiety disorders and symptoms</b>              |                           |                          |  |
| Anxiety symptoms                                   | Activation syndrome       | 1                        | 0  |
|  | Agitation                 | 2                        | 0  |
|  | Anxiety                   | 2                        | 0  |
|  | Stress                    | 1                        | 0  |
| <b>Depressed mood disorders and disturbances</b>   |                           |                          |  |
| Depressive disorders                               | Depression                | 1                        | 0  |
| <b>Disturbances in thinking and perception</b>     |                           |                          |  |
| Thinking disturbances                              | Thinking abnormal         | 1                        | 0  |
| <b>Schizophrenia and other psychotic disorders</b> |                           |                          |  |
| Psychotic disorder NEC                             | Psychotic disorder        | 1                        | 0  |
| <b>Sleep disorders and disturbances</b>            |                           |                          |  |
| Disturbances in initiating and maintaining sleep   | Insomnia                  | 1                        | 0  |
| <b><i>Psychiatric disorders SOC Total</i></b>      |                           | <b>10</b>                | <b>0</b>   |

Figure 4 – Primary SOC output listing, MedDRA Version 17.1 – example. Note that some PTs are multiaxial, however, this figure shows only the primary SOC assignments



| <b>English Alphabetical Order</b>  | <b>Internationally Agreed Order</b>  |
|--|--|
| <i>Blood and lymphatic system disorders</i>                                | <i>Infections and infestations</i>   |
| <i>Cardiac disorders</i>   | <i>Neoplasms benign, malignant and unspecified (incl cysts and polyps)</i> |
| <i>Congenital, familial and genetic disorders</i>                          | <i>Blood and lymphatic system disorders</i>                                |
| <i>Ear and labyrinth disorders</i>   | <i>Immune system disorders</i>   |
| <i>Endocrine disorders</i>   | <i>Endocrine disorders</i>   |
| <i>Eye disorders</i>   | <i>Metabolism and nutrition disorders</i>                                  |
| <i>Gastrointestinal disorders</i>  | <i>Psychiatric disorders</i>   |
| <i>General disorders and administration site conditions</i>                | <i>Nervous system disorders</i>  |
| <i>Hepatobiliary disorders</i>   | <i>Eye disorders</i>   |
| <i>Immune system disorders</i>   | <i>Ear and labyrinth disorders</i>   |
| <i>Infections and infestations</i>   | <i>Cardiac disorders</i>   |
| <i>Injury, poisoning and procedural complications</i>                      | <i>Vascular disorders</i>  |
| <i>Investigations</i>  | <i>Respiratory, thoracic and mediastinal disorders</i>                     |
| <i>Metabolism and nutrition disorders</i>                                  | <i>Gastrointestinal disorders</i>  |
| <i>Musculoskeletal and connective tissue disorders</i>                     | <i>Hepatobiliary disorders</i>   |
| <i>Neoplasms benign, malignant and unspecified (incl cysts and polyps)</i> | <i>Skin and subcutaneous tissue disorders</i>                              |
| <i>Nervous system disorders</i>  | <i>Musculoskeletal and connective tissue disorders</i>                     |
| <i>Pregnancy, puerperium and perinatal conditions</i>                      | <i>Renal and urinary disorders</i>   |
| <i>Product issues</i>  | <i>Pregnancy, puerperium and perinatal conditions</i>                      |
| <i>Psychiatric disorders</i>   | <i>Reproductive system and breast disorders</i>                            |

| <b>English Alphabetical Order</b>                      | <b>Internationally Agreed Order</b>                         |
|--|---|
| <i>Renal and urinary disorders</i>                     | <i>Congenital, familial and genetic disorders</i>           |
| <i>Reproductive system and breast disorders</i>        | <i>General disorders and administration site conditions</i> |
| <i>Respiratory, thoracic and mediastinal disorders</i> | <i>Investigations</i>                                       |
| <i>Skin and subcutaneous tissue disorders</i>          | <i>Injury, poisoning and procedural complications</i>       |
| <i>Social circumstances</i>                            | <i>Surgical and medical procedures</i>                      |
| <i>Surgical and medical procedures</i>                 | <i>Social circumstances</i>                                 |
| <i>Vascular disorders</i>                              | <i>Product issues</i>                                       |

*Figure 5 – The alphabetical SOC order (in English) and the Internationally Agreed Order of SOCs. Example as of MedDRA Version 23.0.*

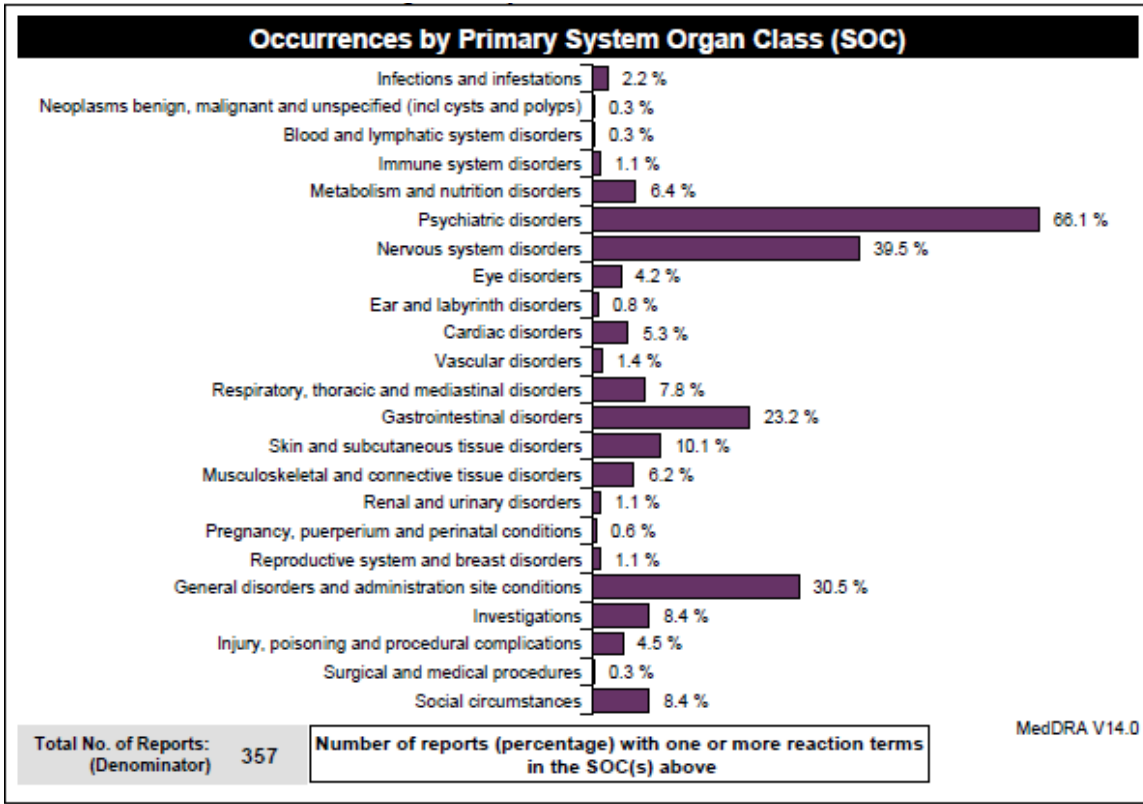


Figure 6 – Example of a graphical display (frequency by primary SOC)

Figure 2  
Relative frequency of events per primary [1] and per secondary [2] SOC

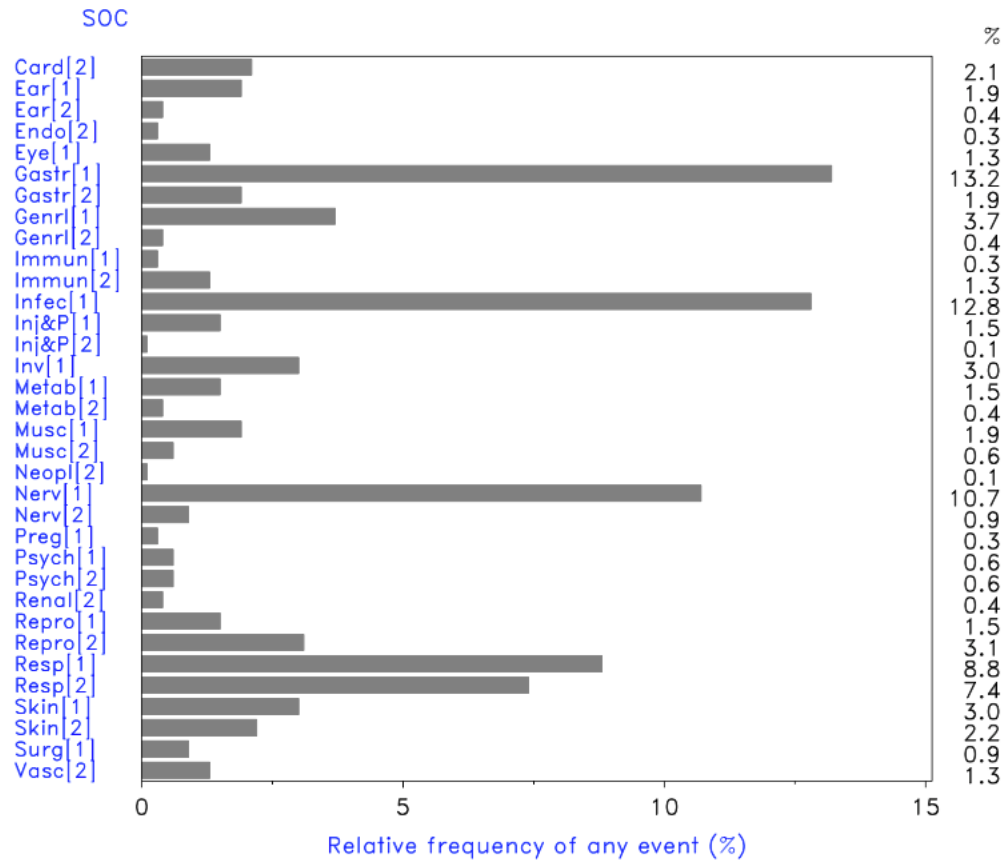


Figure 7 – Example of a graphical display (frequency by primary and secondary SOC)

| System Organ Class                                   | Number of All Reactions* | Reactions* (% of total) | Number of Reactions* where outcome of AR report was fatal |
|--|--------------------------|-------------------------|---|
| Gastrointestinal disorders                           | 1                        | 1.92 %                  | 0   |
| General disorders and administration site conditions | 10                       | 19.23 %                 | 0   |
| Hepatobiliary disorders                              | 2                        | 3.85 %                  | 0   |
| Immune system disorders                              | 1                        | 1.92 %                  | 0   |
| Infections and infestations                          | 1                        | 1.92 %                  | 0   |
| Investigations                                       | 7                        | 13.46 %                 | 0   |
| Metabolism and nutrition disorders                   | 1                        | 1.92 %                  | 0   |
| Musculoskeletal and connective tissue disorders      | 1                        | 1.92 %                  | 0   |
| Nervous system disorders                             | 10                       | 19.23 %                 | 0   |
| Psychiatric disorders                                | 10                       | 19.23 %                 | 0   |
| Renal and urinary disorders                          | 2                        | 3.85 %                  | 0   |
| Respiratory, thoracic and mediastinal disorders      | 2                        | 3.85 %                  | 0   |
| Skin and subcutaneous tissue disorders               | 4                        | 7.69 %                  | 0   |
| <b>Total Number of Reactions:</b>                    | <b>52</b>                | <b>100.00 %</b>         | <b>0</b>  |

Figure 8 – Example of a tabular display (frequency by primary SOC)

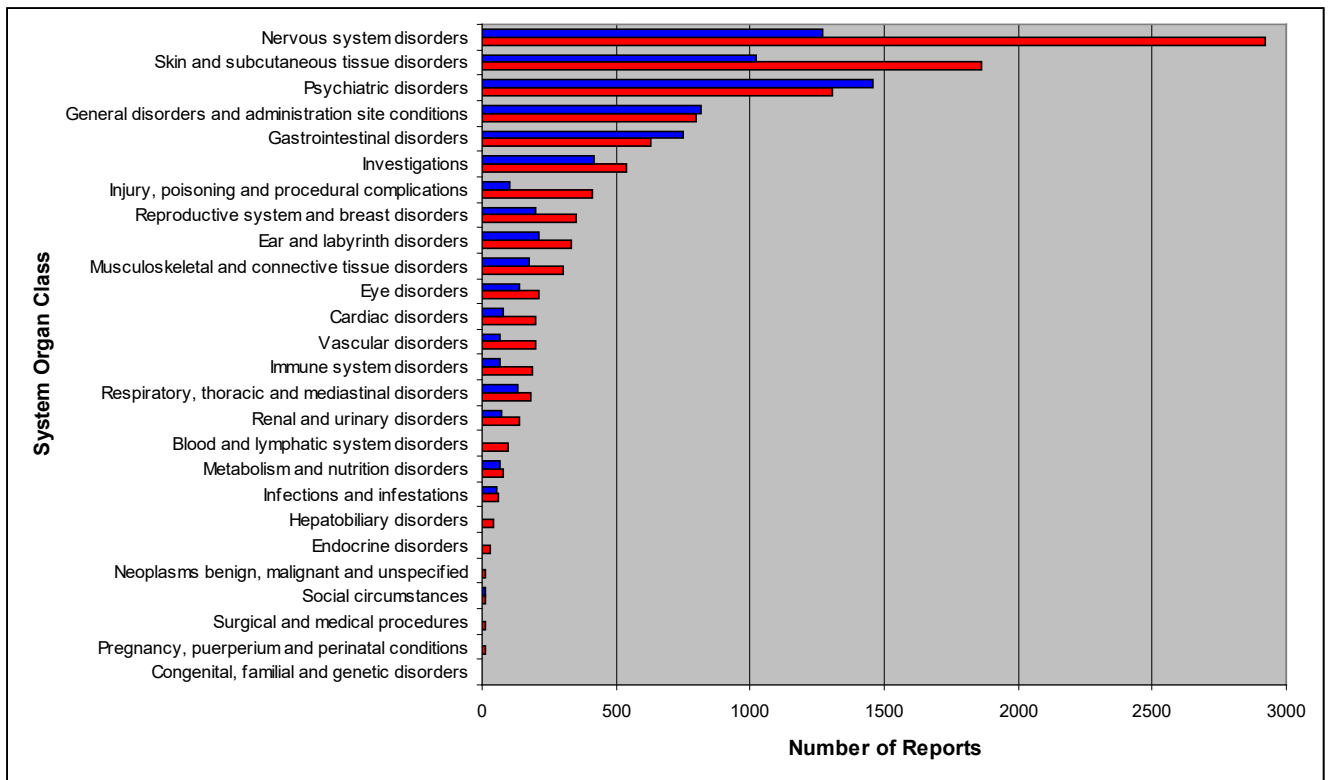
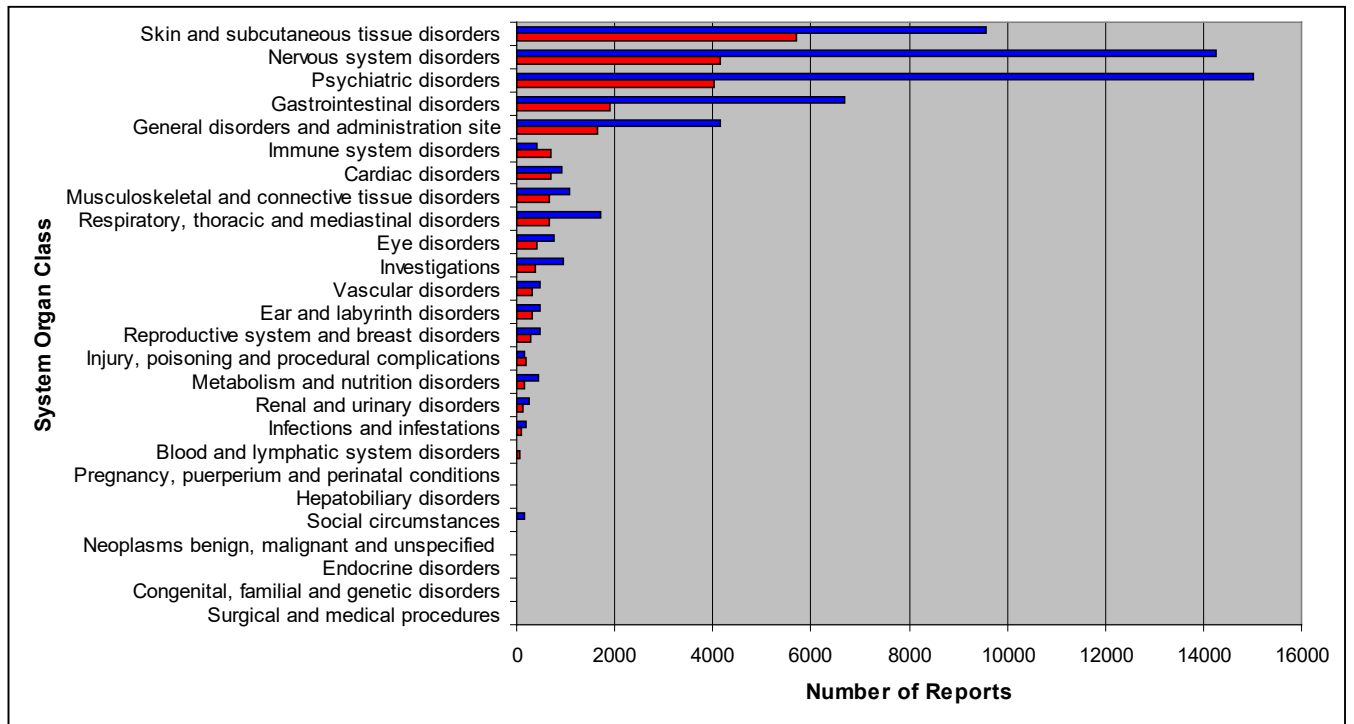


Figure 9a – The upper bar of each pair represents numbers of reports from Consumers (blue) and the lower bar reports from Health Care Professionals (red) (Population 1)



*Figure 9b – The upper bar of each pair represents numbers of reports from Consumers (blue) and the lower bar reports from Health Care Professionals (red) (Population 2)*

# Most Frequent On-Therapy Adverse Events PTs sorted by relative risk

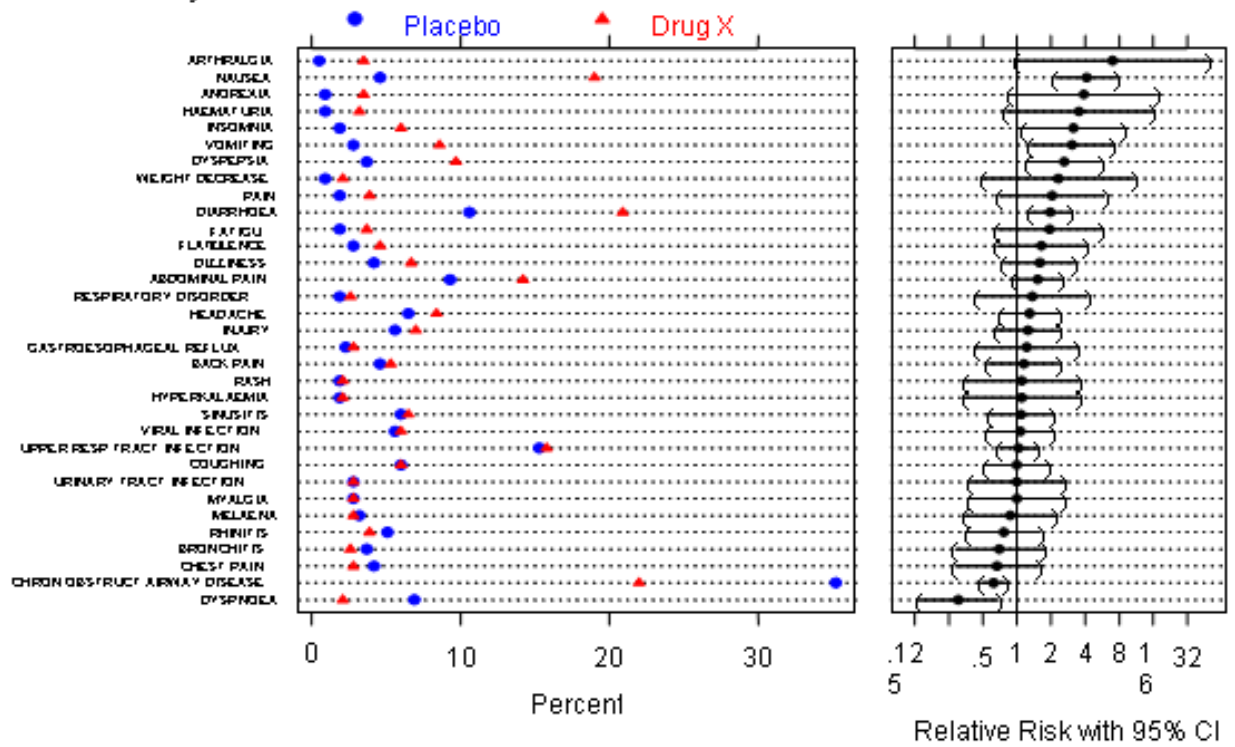


Figure 10 – For a small dataset, a display of PTs may be adequate

## **SOC Infections and infestations**

### **Primary SOC Analysis**

| <b>Adverse Event (MedDRA v23.0)</b>         | <b>25 mg MyDrug (N=44)</b> | <b>Placebo (N=15)</b> |
|---|----------------------------|-----------------------|
| <i>SOC Infections and infestations</i>      | 14 (31.8%)                 | 4 (26.7%)             |
| PT <i>Upper respiratory tract infection</i> | 5                          | 2                     |
| PT <i>Sinusitis</i>                         | 3                          | 0                     |
| PT <i>Urinary tract infection</i>           | 2                          | 1                     |
| PT <i>Ear infection</i>                     | 2                          | 0                     |
| PT <i>Viral infection</i>                   | 2                          | 0                     |
| PT <i>Bronchitis</i>                        | 1                          | 0                     |
| PT <i>Influenza</i>                         | 1                          | 0                     |
| PT <i>Localised infection</i>               | 0                          | 1                     |
| PT <i>Lower respiratory tract infection</i> | 1                          | 0                     |
| PT <i>Pneumonia</i>                         | 1                          | 0                     |
| PT <i>Tooth abscess</i>                     | 1                          | 0                     |

Example as of MedDRA Version 23.0



**Secondary SOC Analysis (same data as above)**

| <b>Adverse Event (MedDRA v23.0)</b>                        | <b>25 mg MyDrug (N=44)</b> | <b>Placebo (N=15)</b> |
|--|----------------------------|-----------------------|
| <i>SOC Respiratory, thoracic and mediastinal disorders</i> |                            |                       |
| <i>PT Upper respiratory tract infection</i>                | 5                          | 2                     |
| <i>PT Sinusitis</i>  | 3                          | 0                     |
| <i>PT Bronchitis</i>                                       | 1                          | 0                     |
| <i>PT Influenza</i>  | 1                          | 0                     |
| <i>PT Lower respiratory tract infection</i>                | 1                          | 0                     |
| <i>PT Pneumonia</i>  | 1                          | 0                     |
| <i>SOC Infections and infestations</i>                     |                            |                       |
| <i>PT Viral infection</i>                                  | 2                          | 0                     |
| <i>PT Localised infection</i>                              | 0                          | 1                     |
| <i>SOC Renal and urinary disorders</i>                     |                            |                       |
| <i>PT Urinary tract infection</i>                          | 2                          | 1                     |
| <i>SOC Ear and labyrinth disorders</i>                     |                            |                       |
| <i>PT Ear infection</i>                                    | 2                          | 0                     |
| <i>SOC Gastrointestinal disorders</i>                      |                            |                       |
| <i>PT Tooth abscess</i>                                    | 1                          | 0                     |

Example as of MedDRA Version 23.0

*Figure 11 – Programmed primary and secondary SOC outputs*

Asthma/bronchospasm (SMQ) Cases – Narrow Search  
(since 1-JAN-2008)

| ID  | MedDRA_PT                 | REPORT_VERBATIM          | DATE_CREATED |
|-----|---------------------------|--------------------------|--------------|
| 045 | Asthma                    | Asthma attack            | 01-APR-2008  |
| 063 | Asthma                    | Severe asthma            | 10-JUN-2008  |
| 060 | Asthma exercise induced   | Asthma when exercising   | 30-MAY-2008  |
| 091 | Bronchospasm              | Spasms, bronchial        | 12-AUG-2008  |
| 074 | Bronchospasm              | Bronchoconstriction      | 03-JUL-2008  |
| 100 | Bronchial hyperreactivity | Airways hyperreactive    | 20-SEP-2008  |
| 069 | Bronchial hyperreactivity | Reactive airways disease | 21-JUN-2008  |

Asthma/bronchospasm (SMQ) Cases – Broad Search  
(since 1-JAN-2008)

| ID  | MedDRA_PT                    | REPORT_VERBATIM                | DATE_CREATED |
|-----|------------------------------|--------------------------------|--------------|
| 023 | Allergic respiratory disease | Respiratory (allergy) disorder | 18-FEB-2008  |
| 045 | Asthma                       | Asthma attack                  | 01-APR-2008  |
| 063 | Asthma                       | Severe asthma                  | 10-JUN-2008  |
| 060 | Asthma exercise induced      | Asthma when exercising         | 30-MAY-2008  |
| 016 | Bronchial obstruction        | Bronchial obstruct.            | 16-JAN-2008  |
| 039 | Bronchial obstruction        | Bronchus obstruction           | 14-MAR-2008  |
| 091 | Bronchospasm                 | Spasms, bronchial              | 12-AUG-2008  |
| 074 | Bronchospasm                 | Bronchoconstriction            | 03-JUL-2008  |
| 100 | Bronchial hyperreactivity    | Airways hyperreactive          | 20-SEP-2008  |
| 069 | Bronchial hyperreactivity    | Reactive airways disease       | 21-JUN-2008  |
| 088 | Obstructive airways disorder | Obstructive airways disorder   | 29-JUL-2008  |
| 049 | Obstructive airways disorder | Obstructed airways dis.        | 20-APR-2008  |
| 022 | Wheezing                     | Wheeze                         | 16-FEB-2008  |
| 031 | Wheezing                     | Wheezes                        | 02-MAR-2008  |
| 106 | Wheezing                     | Wheezing                       | 28-SEP-2008  |
| 046 | Wheezing                     | Wheezing (acute)               | 06-APR-2008  |

*Figure 12 – Results of Narrow and Broad SMQ Searches*